

RS-2006

GETTING STARTED

BLUETOOTH MODE

HID (Most Common)



SPP



USB MODE

HID



VCP



iOS KEYBOARD TOGGLE (with Clear/Function Key)

ENABLE (Recommended for iOS devices)



DISABLE



BLUETOOTH PIN CODE - SET 0000



QUICK START INSTRUCTIONS



STEP 1 - SCAN BLUETOOTH MODE

Scan the Bluetooth Default barcode that matches the connection method you wish to use, **HID** (recommended) or **SPP**. If you enable the **IOS KEYBOARD TOGGLE** feature by scanning the **ENABLE** barcode, you will also be able to toggle the on-screen keyboard of an iOS device by tapping the Clear/Function key.

STEP 2 - HOLD CLEAR/FUNCTION KEY FOR 5 SEC.

Hold the RS-2006's Clear/Function key for 5 seconds until it beeps and begins to flash blue. The RS-2006 is now discoverable by your host device. This can be cancelled at any time by holding the Clear/Function key for another 5 seconds.

STEP 3 - PERFORM BLUETOOTH SEARCH ON HOST

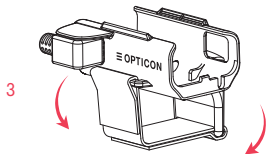
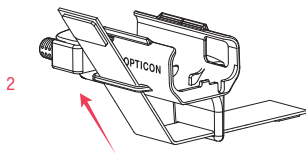
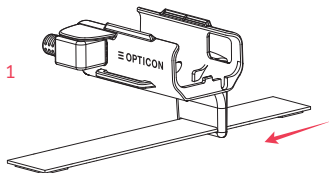
Use the Bluetooth interface on your host device to search for and select the RS-2006. The RS-2006 will beep and the LED will flash blue slower than before indicating pairing was successful. If you are pairing in Bluetooth-SPP mode, the RS-2006 will complete the pairing process as soon as you launch an appropriate application and open the serial port created by your Bluetooth software.

For information about your RS-2006, including detailed setup instructions, downloads and more, visit us at:

www.opticonusa.com/start/oprn or

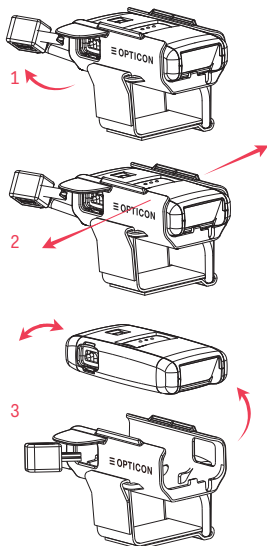
www.opticon.com/service-and-support.aspx

VELCRO STRAP INSTRUCTIONS

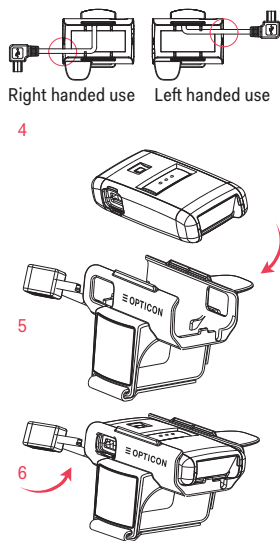


INSTRUCTIONS LEFT-HANDED AND RIGHT-HANDED USE

Detach



Attach



030_06-3006_001

